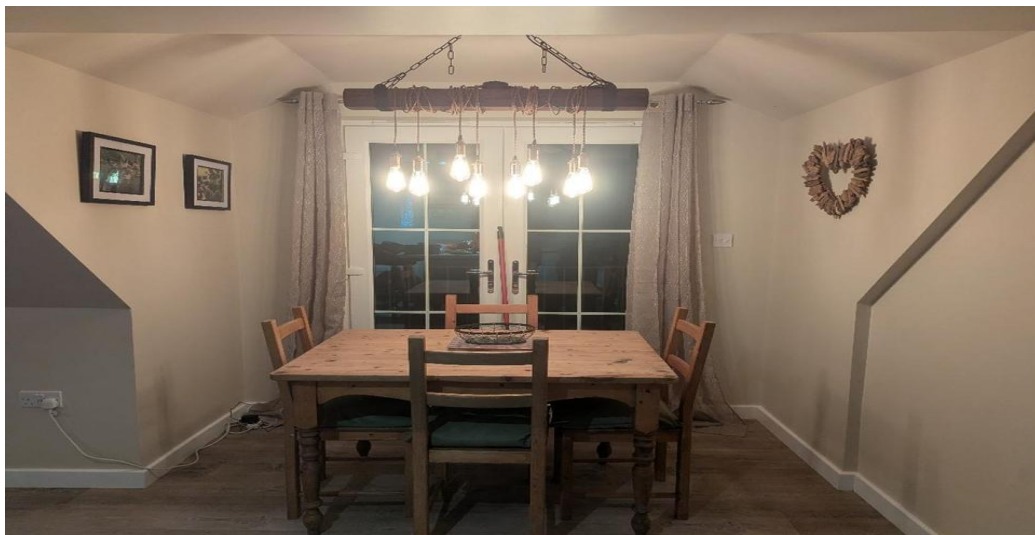


## The Saddlery at Hopton Pools Farm



The Saddlery is in the quiet village of Hopton, Staffordshire surrounded by farmlands and boasting some of the best views in Staffordshire. Despite its relatively secluded location, the Saddlery is situated in close proximity to a number of local, popular venues such as the Staffordshire County Showground, Weston Hall & Sandon Hall and Cannock Chase.

You will have full access to a self-contained first floor apartment including an open plan living room and kitchen with a dining room table / workstation. There is an en-suite bedroom and bathroom.





Amenities include wifi, smart TV, tea and coffee making facilities, microwave, toaster and refrigerator. The living room settee, converts to a double bed.





There is ample on-site parking which can accommodate larger vehicles. The immediate countryside has a range of walking, running and biking trails. The hosts, who are outdoor enthusiasts, can provide suggested routes.





The Saddlery is 10 minutes for the M6 motorway and is close to a range of nearby towns and attractions including Stafford, Stone, Birmingham, The Potteries, The Peak District and is less than 20 miles from Alton Towers.

Overall, the Saddlery boasts spacious, luxurious, modern and well-furnished accommodation in a picturesque and tranquil setting.

(It is of note that Hopton Pools Farm and Saddlery is located at the end of a 300m farm track, which might not be suitable for low sided vehicles, guests are advised to exercise caution and drive at a slow speed).

The Saddlery at Hopton Pools Farm is £159 per night (minimum 1 night, [no pets]) please email [adam@pickford.net](mailto:adam@pickford.net) or [insaini17@aol.com](mailto:insaini17@aol.com) for availability.

